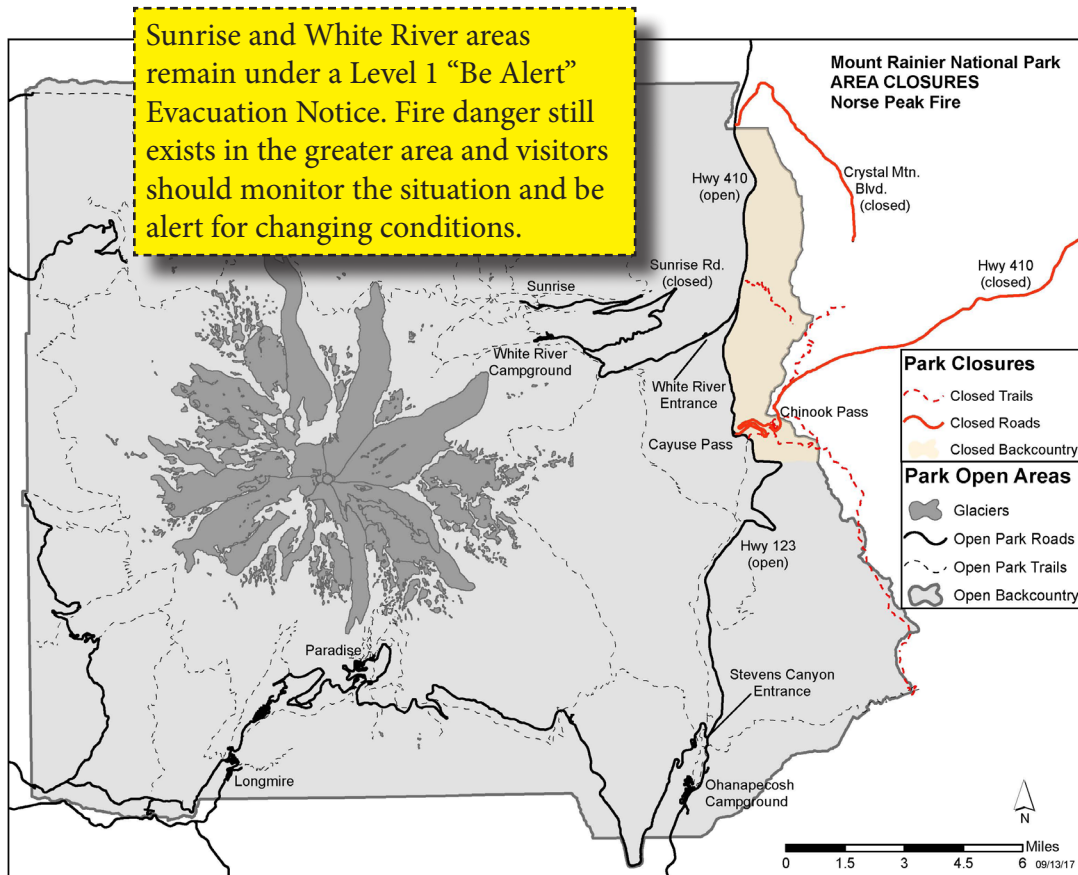


# Mount Rainier National Park

## Fire Closure Information



September 2017 - A small portion of the northeast area of the park is closed due to the unpredictable fire behavior of the Norse Peak Fire. The fire is burning outside the east boundary of the park. *The burn ban has been lifted for campfires in Cougar Rock, Ohanapecosh, and White River campgrounds.*

### What's OPEN?

- SR 410 from the north entrance to Cayuse Pass & SR 123 from Cayuse Pass south
- Sunrise, White River, White River Campground, and area facilities and trails
- Ohanapecosh Visitor Center and Campground, Grove of the Patriarchs, and Silver Falls
- West and south sides of the park including Longmire, Paradise, Stevens Canyon, Carbon River, Mowich areas
- The Wonderland Trail, trails west of SR 410, and Shriners Peak and Laughingwater Creek trails

### What's CLOSED?

The northeast portion, as indicated in the map above, including:

- SR 410 between Cayuse and Chinook passes. Detour via US12/White Pass and SR 123
- Tipsoo Lake, Naches Loop Trail, and Chinook Pass remain closed
- Trails and cross country zones on the east side of SR 410 are closed, including the Eastside Trail just below Cayuse Pass northwards
- The Pacific Crest Trail is closed from White Pass to Snoqualmie Pass