

121°30'W

121°20'W

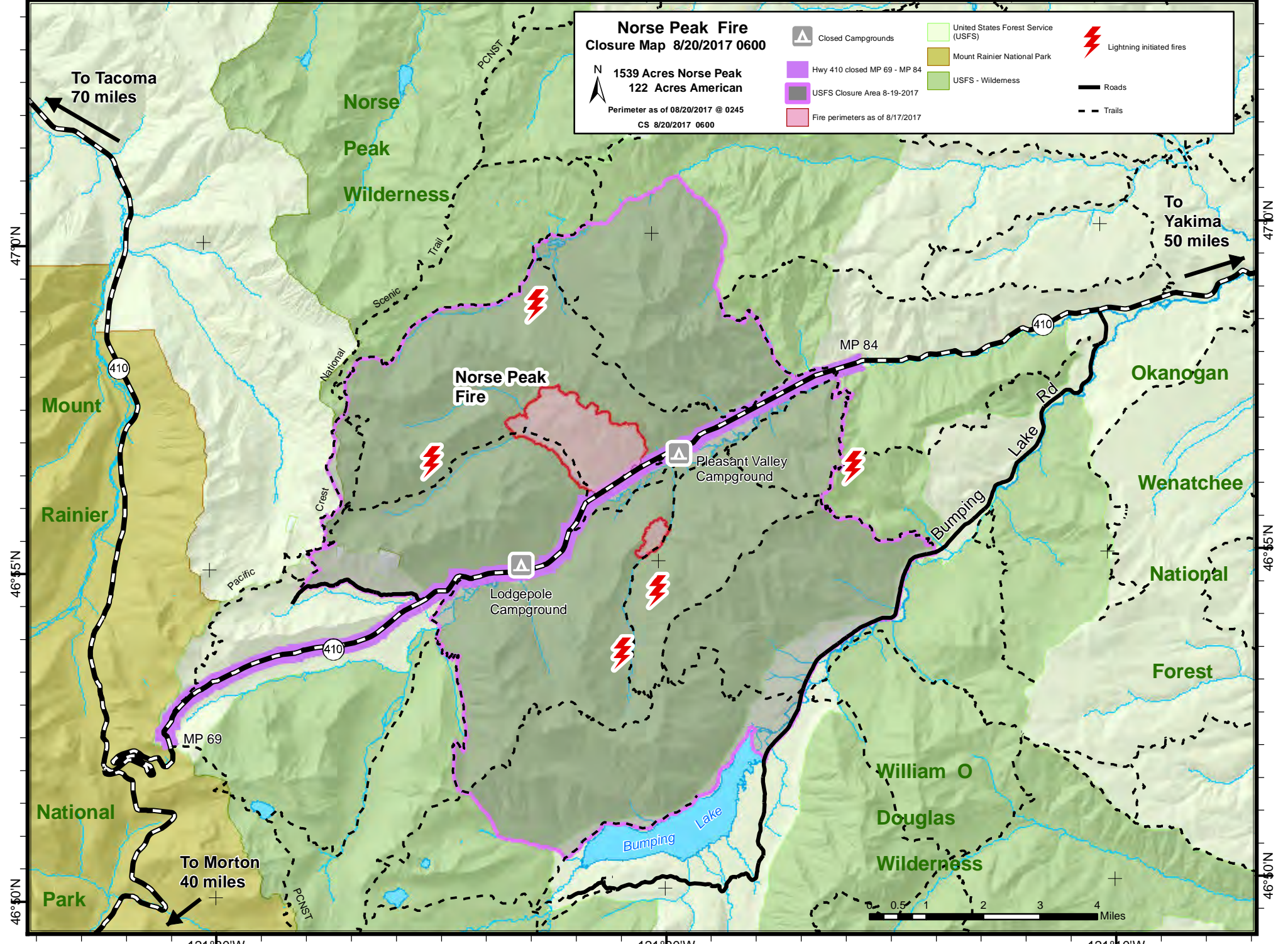
121°10'W

Norse Peak Fire Closure Map 8/20/2017 0600

1539 Acres Norse Peak
122 Acres American

Perimeter as of 08/20/2017 @ 0245
CS 8/20/2017 0600

	Closed Campgrounds		United States Forest Service (USFS)		Lightning initiated fires
	Hwy 410 closed MP 69 - MP 84		Mount Rainier National Park		Roads
	USFS Closure Area 8-19-2017		USFS - Wilderness		Trails
	Fire perimeters as of 8/17/2017				



47°0'N

47°0'N

46°55'N

46°55'N

46°50'N

46°50'N

121°30'W

121°20'W

121°10'W