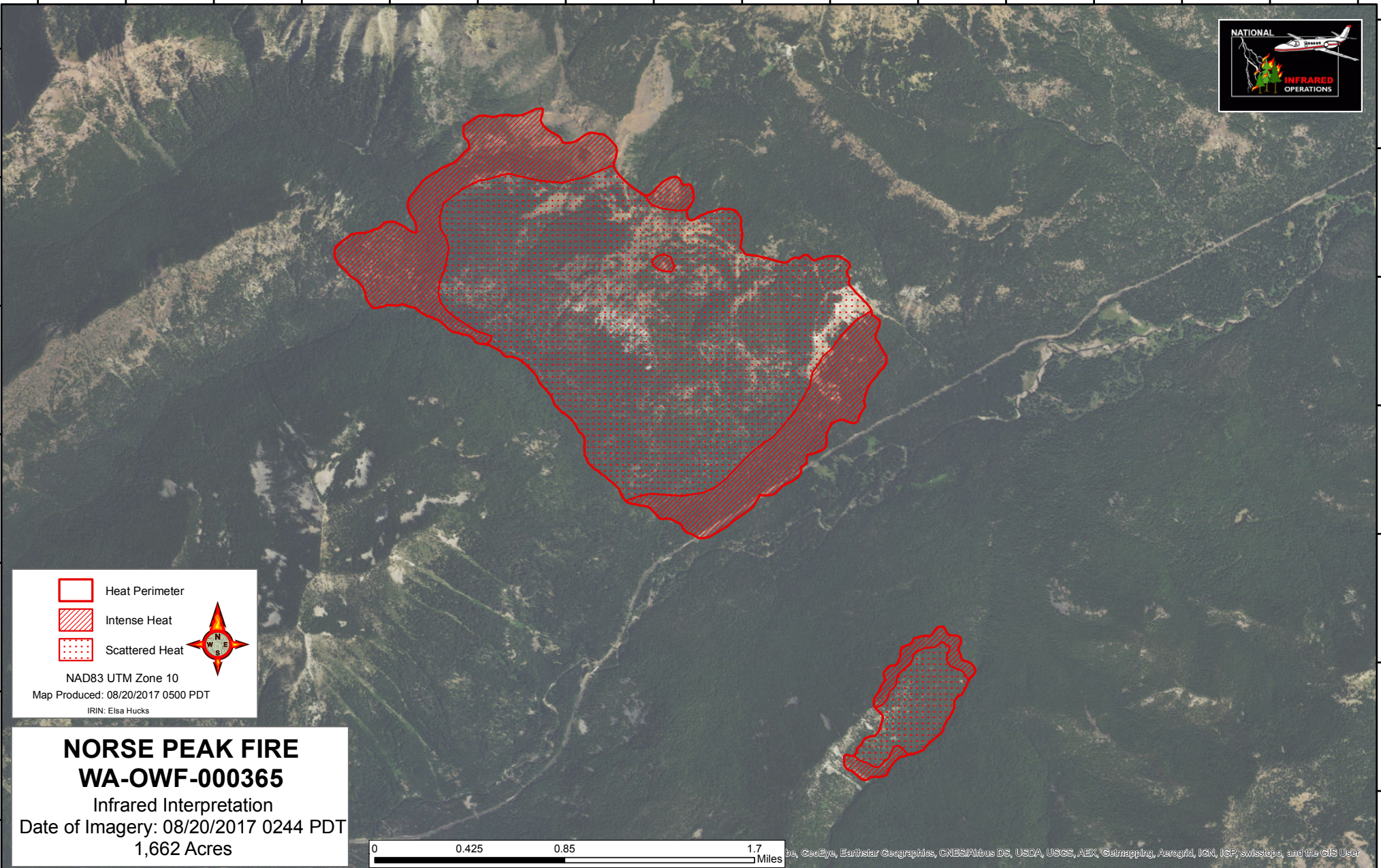






121°25'0"W 121°24'30"W 121°24'0"W 121°23'30"W 121°23'0"W 121°22'30"W 121°22'0"W 121°21'30"W 121°21'0"W 121°20'30"W 121°20'0"W 121°19'30"W 121°19'0"W 121°18'30"W 121°18'0"W 121°17'30"W

46°58'0"N
46°57'30"N
46°57'0"N
46°56'30"N
46°56'0"N
46°55'30"N
46°55'0"N

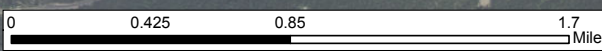


 Heat Perimeter
 Intense Heat
 Scattered Heat



NAD83 UTM Zone 10
 Map Produced: 08/20/2017 0500 PDT
 IRIN: Elsa Hucks

NORSE PEAK FIRE
WA-OWF-000365
 Infrared Interpretation
 Date of Imagery: 08/20/2017 0244 PDT
 1,662 Acres



121°25'0"W 121°24'30"W 121°24'0"W 121°23'30"W 121°23'0"W 121°22'30"W 121°22'0"W 121°21'30"W 121°21'0"W 121°20'30"W 121°20'0"W 121°19'30"W 121°19'0"W 121°18'30"W 121°18'0"W 121°17'30"W

be, GeoEye, Earthstar Geographics, CNES/Airbus DS, USDA, USGS, AEX, Geomatics, Aergrid, IGN, IGP, swisstopo, and the GIS User