

121°15'W

121°20'W

47°10'N

47°10'N

46°55'N

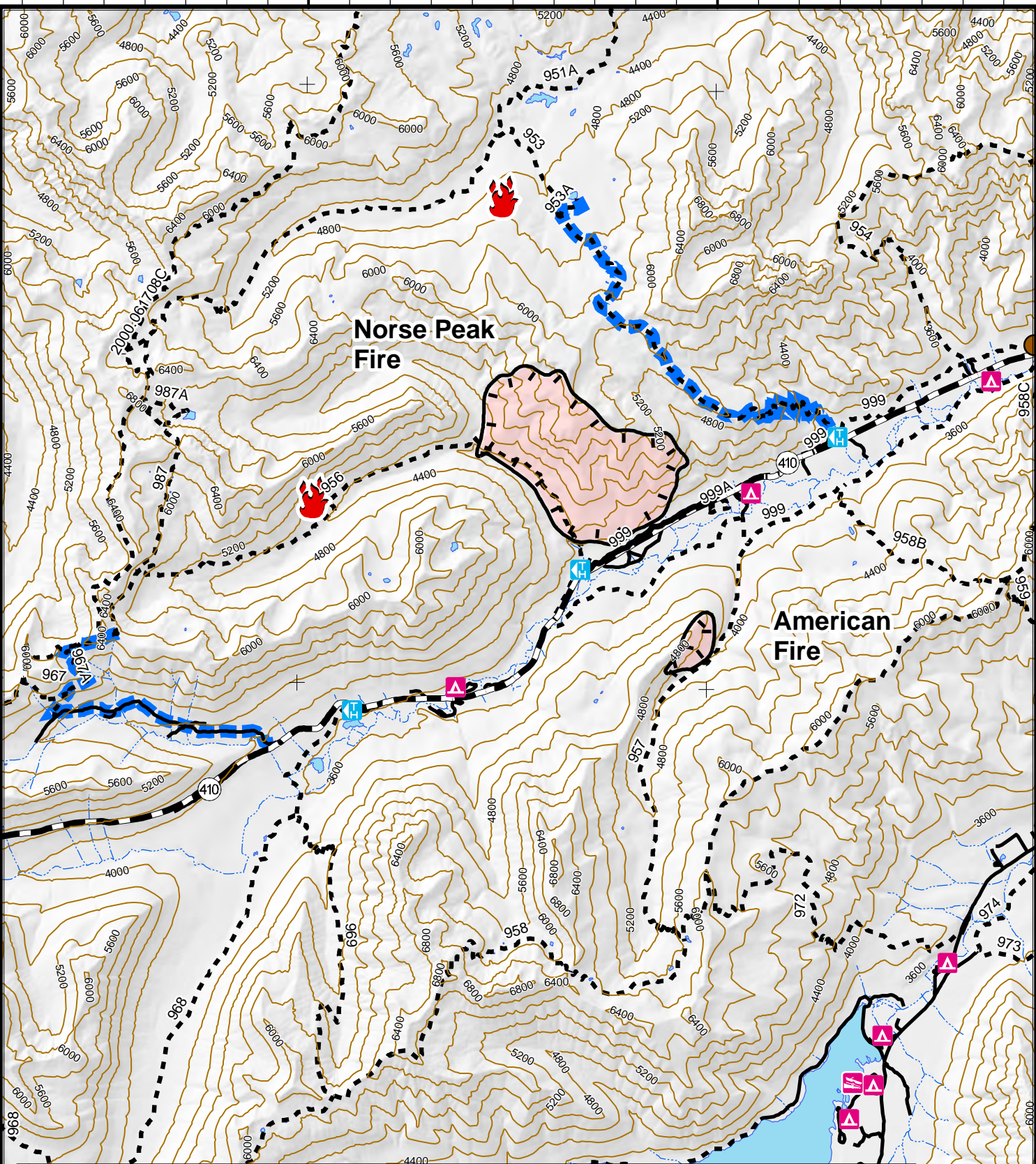
46°55'N

46°50'N

46°50'N

121°25'W

121°20'W



Norse Peak
WA-OWF-000365
IAP Map 8/18/2017 0700

1200 Acres Norse Peak
 70 Acres American

Perimeter as of 08/17/2017 © 0800
 CS 8/17/2017 2100

	Uncontrolled Fire Edge		State Highway		Streams
	Strikes		Roads		<all other values>
	Completed Hand Line		Trails		Campground
	index_contour_40f_10m		Proposed Control Line		Trailhead

0 0.5 1 2 3 4 Miles