



**UNITED STATES DEPARTMENT OF AGRICULTURE
FOREST SERVICE
WILLAMETTE NATIONAL FOREST
WESTFIR, OREGON**

ORDER # 06-18-10-17-31

**FOREST ORDER
OCCUPANCY AND USE**

Pursuant to 16 USC 551 and 36CFR 261.50 (a) and (b), and to provide for public safety, the following acts are prohibited in the areas described in this order within the administrative boundaries of the Willamette National Forest. This Order is effective on September 19, 2017 and shall be in effect until rescinded or December 1, 2017.

PROHIBITIONS:

1. Entering into or being upon National Forest System lands closed for the protection of public health or safety. **36 CFR § 261.53(e)**
2. Being on the road. **36 CFR § 261.54(e)**
3. Being on a trail. **36 CFR § 261.55(a)**

KELSEY CLOSURE AREA DESCRIPTION:

All areas affected by this closure are located within Lane County, Oregon. In Township 20S, Range 4E, Sections 33-36. In Township 20S, Range 5E, Section 31. In Township 21S, Range 4E, Sections 1-4, 8-17, 21-27, 36. In Township 21S, Range 5E, Sections 4-9, 15-22, 25-36. In Township 22S, Range 5E, Sections 1-6, 8-13, 15, 16.

The closure includes all US Forest Service lands, roads and trails within the boundary described below and as depicted on the attached map and incorporated into this order as "Attachment A".

Beginning where Forest Service Road (FSR) 5883 intersects State Highway 58 and the Union Pacific Railroad (railroad). Continuing west along the north side of the railroad, all lands north of the railroad but not including the railroad, to where the railroad intersect FSR 5871. Continuing north and west along FSR 5871, all lands east and north of FSR 5871 but not including FSR 5871, to where FSR 5871 intersects FSR 2408. Continuing east along FSR 2408, all lands south of FSR 2408 and including FSR 2408, for 600 feet to where FSR 2408 intersects FSR 273 at its west end. Continuing northeasterly along FSR 273, all lands east and south of FSR 273 and including FSR 273, to the water hole where FSR 273 crosses the side tributary of Salmon Creek (tributary) at the intersection with FSR 275. Continuing north from the water hole down the tributary away from FSR 275, and all lands east of the tributary, to where the tributary enters Salmon Creek in the southeast corner of Section 33, T20S, R4E. Continuing east along the south side Salmon Creek, all lands south of Salmon Creek, to where Salmon Creek intersects FSR 24 in Section 36, T20S, R4E. Continuing east along FSR 24, all lands south of FSR 24 but not including FSR 24, to its terminus at FSR 2421. Continuing southeasterly along FSR 2421, all lands west and south of FSR 2421 but not including FSR 2421, to the intersection of FSR 2421 and FSR 390. Continuing southeasterly along FSR 390, all lands west and south of FSR 390 and

ORDER # 06-18-10-17-31

including FSR 390, for 2.8 miles to the boundary line between Section 36, T21S, R5E, and Section 1, T 22S, R5E (boundary line). Continuing west for 1,460 feet along this boundary line, all lands north of this boundary line, to the intersection of the boundary line with FSR 379. Continuing southeasterly along FSR 379, all lands west and south of FSR 379 but not including FSR 379, to the intersection of FSR 379 and FSR 5883. Continuing southwesterly along FSR 5883, all lands west and north of FSR 5883 but not including FSR 5883, to the intersection of FSR 5883 and State Highway 58.

EXEMPTIONS:


Pursuant to 36 CFR § 261.50 (e), the following persons are exempt from this Order:

- (1) Any person with a permit specifically authorizing the otherwise prohibited act or omission;
- (2) Any Federal, State, or local officer, or member of an organized rescue or fire fighting force in the performance of an official duty.
- (3) Owners or lessees of land in the area.

These restrictions are implemented for the safety of the public, and fire suppression personnel.

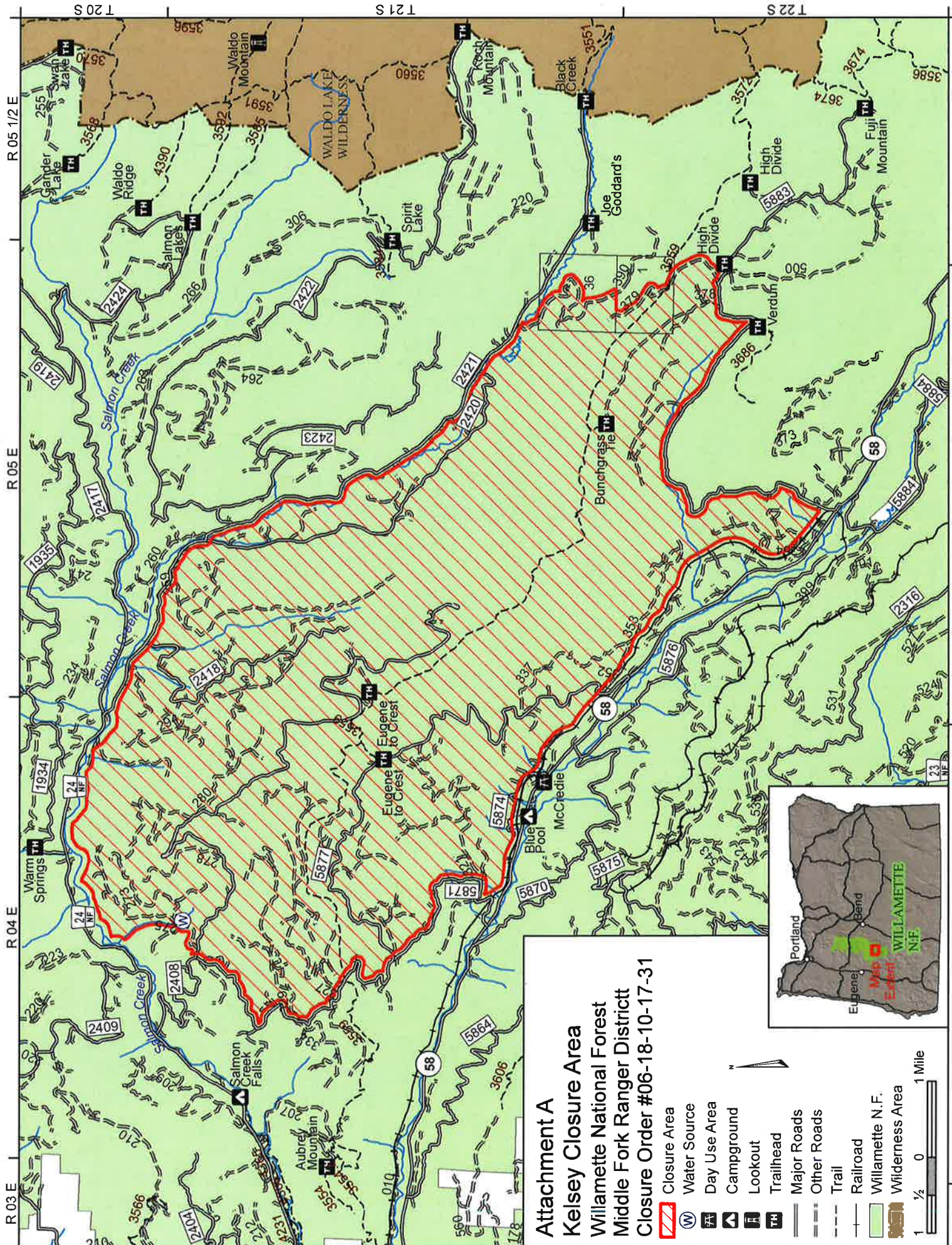
These prohibitions are in addition to the general prohibitions in 36 CFR Part 261, Subpart A.

Executed in Springfield, Oregon, on this 19 day of September, 2017.



Holly Jewkes
Deputy Forest Supervisor
Willamette National Forest

Violations of these prohibitions are punishable by a fine of not more than \$5,000.00 for an individual or \$10,000.00 for a corporation or imprisonment for not more than six months or both. Title 16 USC Section 551.



Attachment A
Kelsey Closure Area
Willamette National Forest
Middle Fork Ranger District
Closure Order #06-18-10-17-31

- Closure Area
- Water Source
- Day Use Area
- Campground
- Lookout
- Trailhead
- Major Roads
- Other Roads
- Trail
- Railroad
- Willamette N.F.
- Wilderness Area

