

# Mt. Hood National Forest Indian Creek Fire Closures Order #06-06-06-17-04 Exhibit A



## Closures

### Trails:

- Eagle Creek Trail #440 (within the Mark O. Hatfield Wilderness)
- Eagle Benson Trail #434
- Indian Springs Trail #435
- Eagle Tanner Trail #433
- Tanner Butte #401
- Chinidere Cutoff #406M



### Roads:

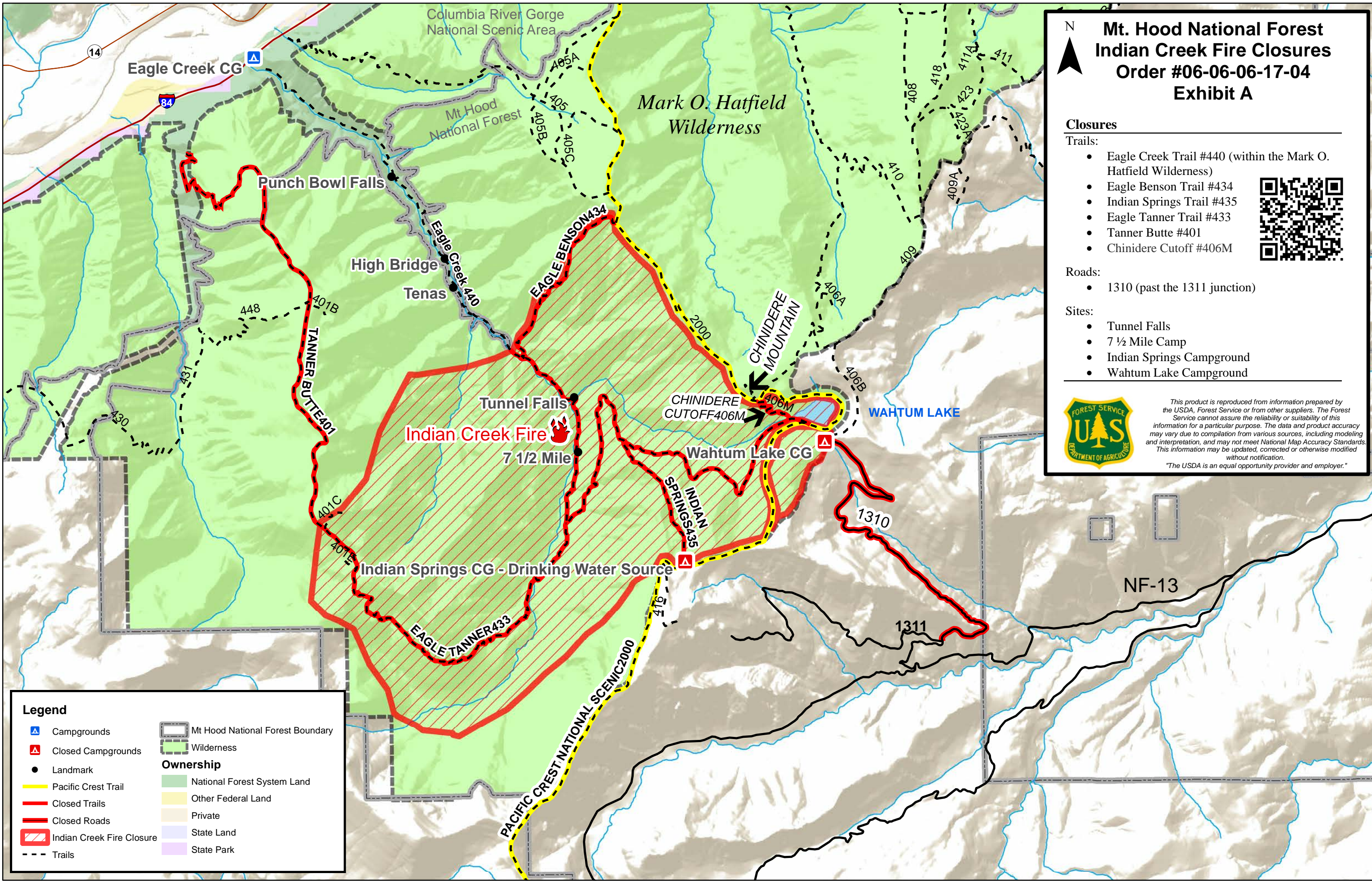
- 1310 (past the 1311 junction)

### Sites:

- Tunnel Falls
- 7 1/2 Mile Camp
- Indian Springs Campground
- Wahtum Lake Campground



This product is reproduced from information prepared by the USDA, Forest Service or from other suppliers. The Forest Service cannot assure the reliability or suitability of this information for a particular purpose. The data and product accuracy may vary due to compilation from various sources, including modeling and interpretation, and may not meet National Map Accuracy Standards. This information may be updated, corrected or otherwise modified without notification.  
"The USDA is an equal opportunity provider and employer."



**Legend**

|                           |                                  |
|---------------------------|----------------------------------|
| Campgrounds               | Mt Hood National Forest Boundary |
| Closed Campgrounds        | Wilderness                       |
| Landmark                  | <b>Ownership</b>                 |
| Pacific Crest Trail       | National Forest System Land      |
| Closed Trails             | Other Federal Land               |
| Closed Roads              | Private                          |
| Indian Creek Fire Closure | State Land                       |
| Trails                    | State Park                       |