

FLATHEAD NATIONAL FOREST  
 650 Wolfpack Way  
 Kalispell, MT 59901  
 Forest Supervisor's Order

**TRAIL RESTRICTION ORDER**

**Trail #263- West Side South Fork, Trail #100- Helen Creek Trail, Trail #105- Hungry Creek Trail, Trail #80D- Black Bear Bridge Ford**

Pursuant to Title 36 Code of Federal Regulation 261.50 (b), the following restriction is in effect on the Spotted Bear Ranger District on the Flathead National Forest, Flathead County, Montana as depicted on the map attached as Exhibit A and hereby incorporated into the order. This temporary restriction is in addition to those enumerated in Subpart A, Part 261, Title 36, Code of Federal Regulations. These restrictions are effective immediately.

**36 CFR 261.55 – Forest Development Trails:**

**It is prohibited to be upon any trail which is closed by Forest Supervisor's Order.  
 Title 36 CFR 261.55(a)**

**Description of Restricted National Forest Access**

- **Trail #263 west side south fork from its junction with Trail #29 Smith-Little Salmon to its junction with Trail #263B- Black bear cut south (Kelly point trail), this junction is found in T 23N, R 14W, SW corner of SE corner of Section 27.**
- **Trail #100- Helen Creek Trail in its entirety**
- **Trail #105- Hungry Creek Trail from its junction with Trail #263 to its junction with Trail #107- Picture Ridge**
- **Trail #80D- Both the North and South spur trails leading to the Black Bear Bridge off of Trail #80- East Side South Fork Trail**

**Exemptions:**

Pursuant to Title 36 CFR 261.50(e), the following are exempt from this restriction:

1. Persons with a permit issued by a forest officer specifically authorizing the otherwise prohibited act or omission.
2. Any Federal, State, or local officer, or member of an organized rescue or fire fighting force in the performance of an official duty.

Done at Kalispell, Montana this 21<sup>st</sup> day of August 2019.

By: Chip Weber  
CHIP WEBER  
Forest Supervisor

**Penalty:**

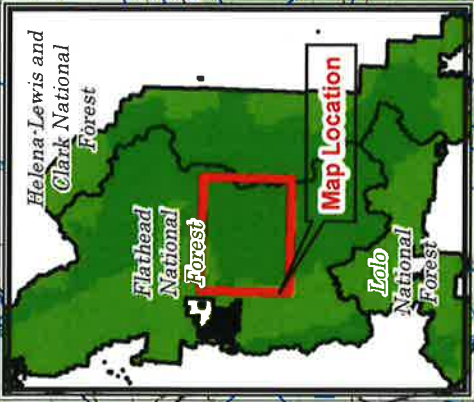
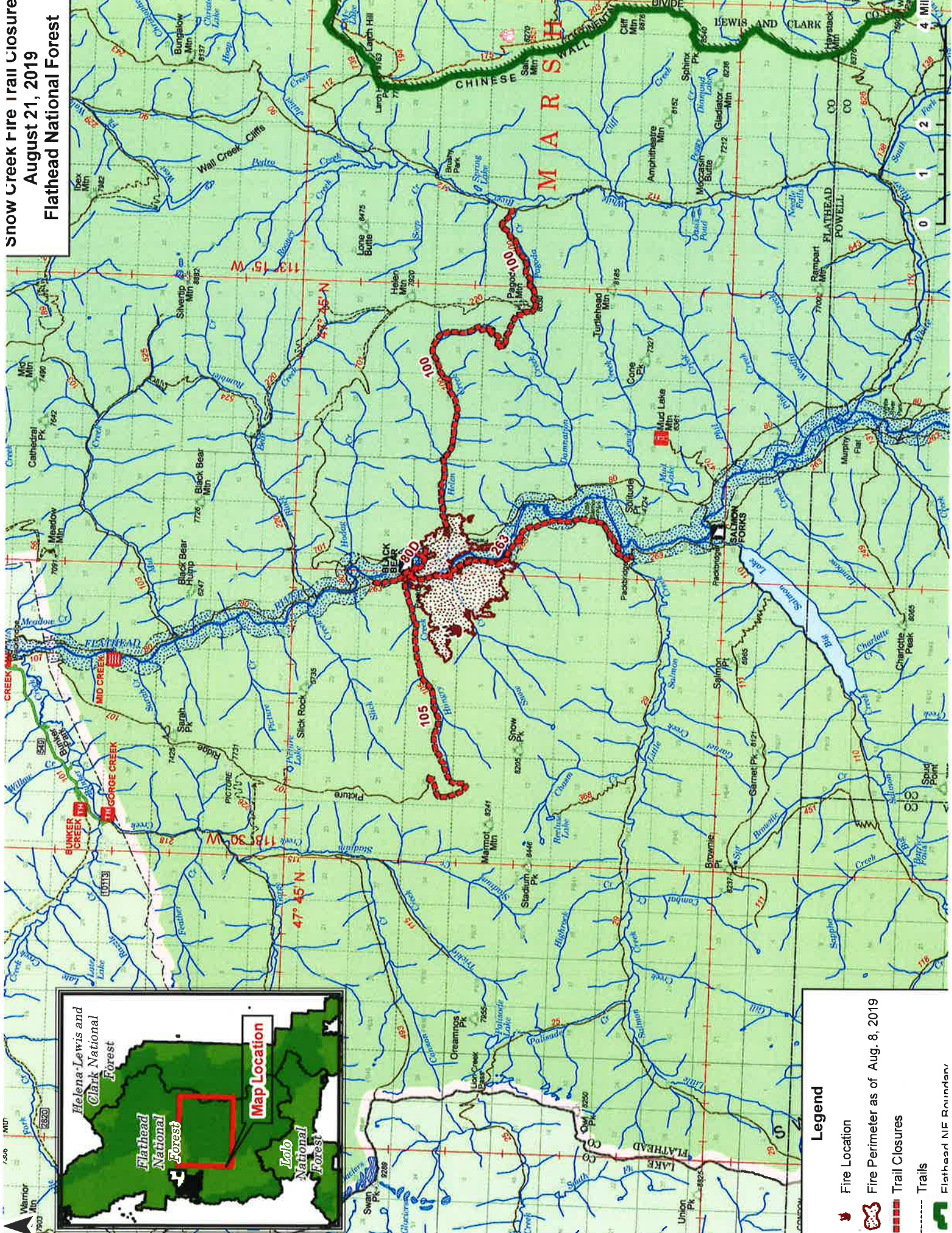
Violation of these prohibitions is punishable by a fine of not more than \$5,000 for an individual or \$10,000 for an organization, or imprisonment for not more than 6 months, or both (16 USC 551 and 18 USC 3559 and 3571).

**Notification:**

A copy of this order shall be posted as prescribed under 36 CFR 261.51.



**Snow Creek Fire Trail Closures**  
**August 21, 2019**  
**Flathead National Forest**



**Legend**

- Fire Location
- Fire Perimeter as of Aug. 8, 2019
- Trail Closures
- Trails
- Flathead NIF Boundary