

FLATHEAD NATIONAL FOREST  
650 Wolfpack Way  
Kalispell, MT 59901  
Forest Supervisor's Order

**AREA CLOSURE ORDER  
PAOLA RIDGE FIRE**

Pursuant to Title 36 Code of Federal Regulation 261.50 (b), the following restriction is in effect on the Hungry Horse Ranger District on the Flathead National Forest, Flathead County, Montana as depicted on the map attached as **Exhibit A** and hereby incorporated into the order. This temporary restriction is in addition to those enumerated in Subpart A, Part 261, Title 36, Code of Federal Regulations, and becomes effective when signed and will remain in effect until rescinded. This closure is for public safety during firefighting operations.

**36 CFR 261.53e – Special Closures:**

**It is prohibited to go into or be upon the area [Title 36 CFR 261.53(e)]**

The closure cited in this order is to protect the public from potential harm from wildfires and firefighting operations associated with the existing and potential fire hazards.

**Description of Closed Area:**

**This area closure applies to the Flathead National Forest and closes the following area:**

**All lands contained within the perimeter that is made by BNSF Railroad Tracks, 100 feet north of FS Road #1639, Sections 8, 5 and 32, and 100 feet south of Paola Creek.**

**See attached map, Exhibit A.**

**Exemptions:**

Pursuant to Title 36 CFR 261.50(e), the following are exempt from this restriction:

1. Persons with a permit issued by a forest officer specifically authorizing the otherwise prohibited act or omission.
2. Any Federal, State, or local officer, or member of an organized rescue or fire fighting force in the performance of an official duty.

Done at Kalispell, Montana this 17<sup>th</sup> day of ~~August~~<sup>September</sup>, 2018

By: Chip Weber  
CHIP WEBER  
Forest Supervisor

**Penalty:**

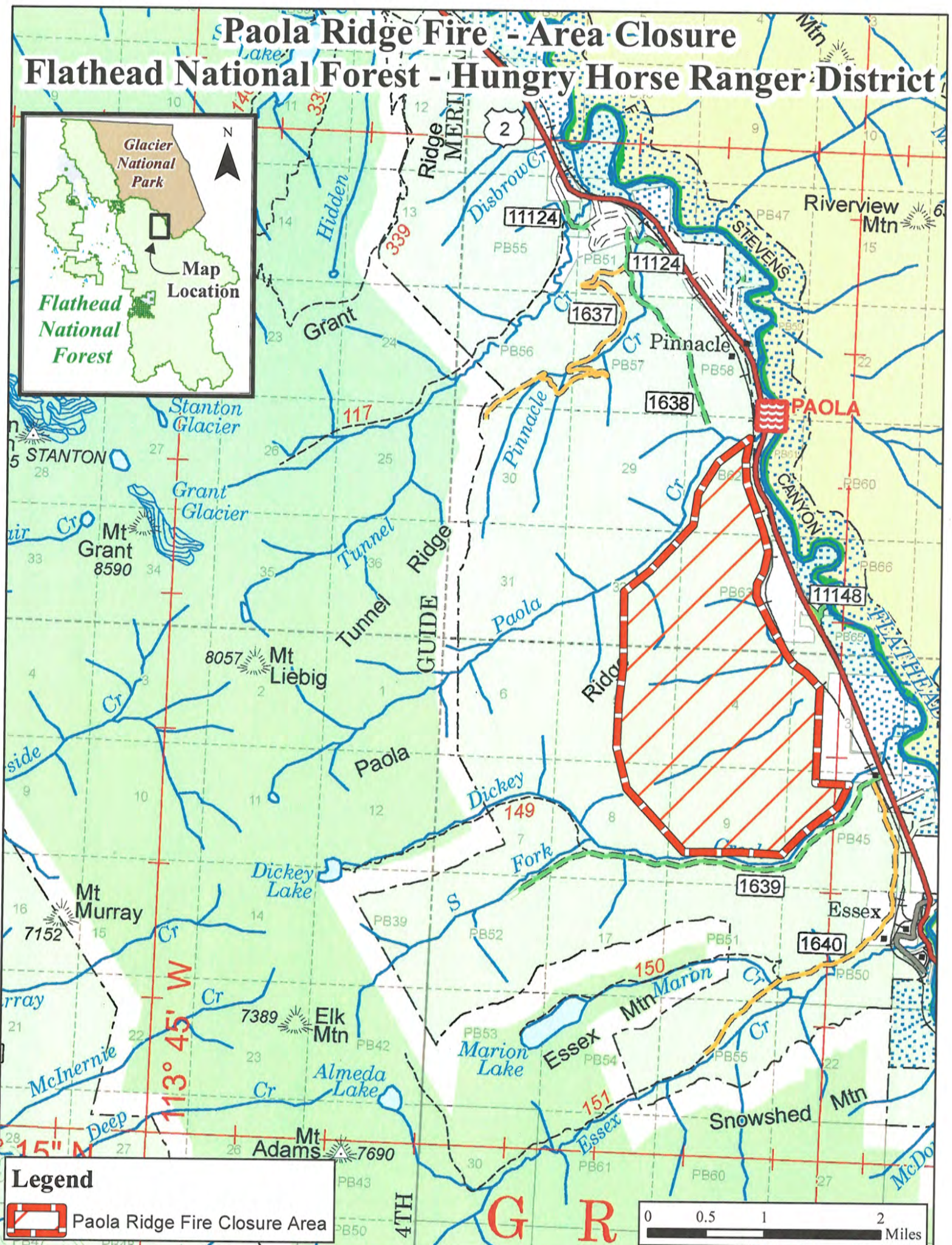
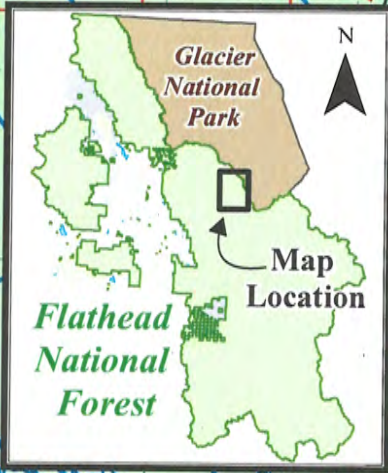
Violation of these prohibitions is punishable by a fine of not more than \$5,000 for an individual or \$10,000 for an organization, or imprisonment for not more than 6 months, or both (16 USC 551 and 18 USC 3559 and 3571).

**Notification:**


A copy of this order shall be posted as prescribed under 36 CFR 261.51.

# Paola Ridge Fire - Area Closure

## Flathead National Forest - Hungry Horse Ranger District



**Legend**

 Paola Ridge Fire Closure Area

