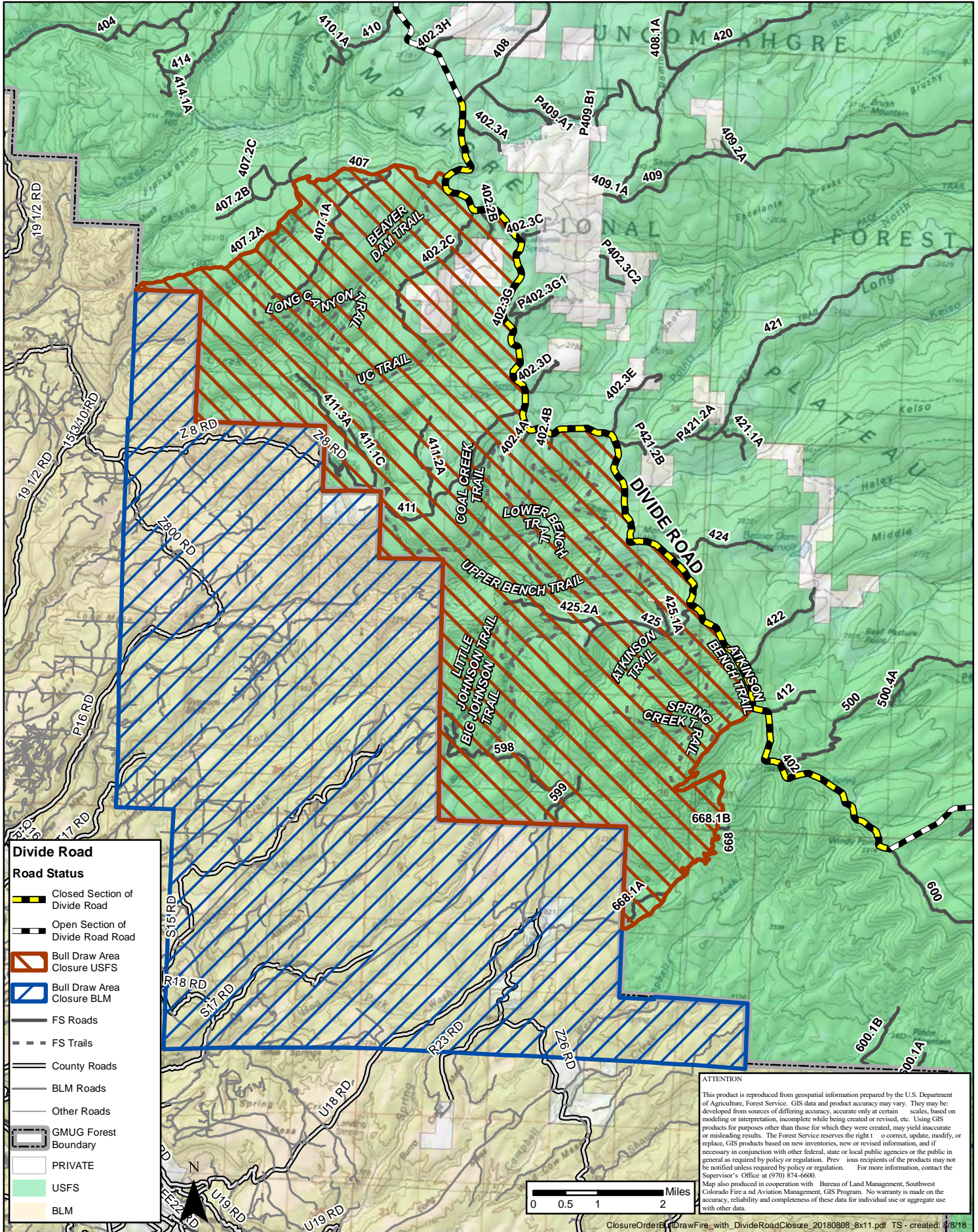


# Bull Draw Fire Emergency Closure Orders



USDA - FS - Grand Mesa, Uncompahgre and Gunnison National Forests  
 Grand Valley Ranger District - Order: GMUG-2018-11 and Order: GMUG-2018-12  
 USDI - BLM - Uncompahgre Field Office - Order: COS0S05-18-02, amended



**Divide Road**

**Road Status**

- Closed Section of Divide Road
- Open Section of Divide Road Road
- Bull Draw Area Closure USFS
- Bull Draw Area Closure BLM
- FS Roads
- FS Trails
- County Roads
- BLM Roads
- Other Roads
- GMUG Forest Boundary
- PRIVATE
- USFS
- BLM

**ATTENTION**

This product is reproduced from geospatial information prepared by the U.S. Department of Agriculture, Forest Service. GIS data and product accuracy may vary. They may be developed from sources of differing accuracy, accurate only at certain scales, based on modeling or interpretation, incomplete while being created or revised, etc. Using GIS products for purposes other than those for which they were created, may yield inaccurate or misleading results. The Forest Service reserves the right to correct, update, modify, or replace, GIS products based on new inventories, new or revised information, and if necessary in conjunction with other federal, state or local public agencies or the public as required by policy or regulation. Previous recipients of the products may not be notified unless required by policy or regulation. For more information, contact the Supervisor's Office at (970) 874-6600.

Map also produced in cooperation with Bureau of Land Management, Southwest Colorado Fire and Aviation Management, GIS Program. No warranty is made on the accuracy, reliability and completeness of these data for individual use or aggregate use with other data.

