

ORDER NO. 0513-18-17
SEQUOIA NATIONAL FOREST
WESTERN DIVIDE RANGER DISTRICT

ALDER AND MOUNTAINEER FIRES AREA, ROADS, AND TRAILS CLOSURE

Pursuant to 16 USC 551 and 36 CFR 261.50(a) and (b), and to provide for public safety, the following acts are prohibited within the Western Divide Ranger District in the Sequoia National Forest. This Order is effective from October 20, 2018 through November 30, 2018.

1. Going into or being upon National Forest System lands within the Alder and Mountaineer Fires Closure Area. The Alder and Mountaineer Fires Closure Area is described in Exhibit A and shown on Exhibit B. 36 CFR 261.53(e).
2. Being on the National Forest System trails within the Alder and Mountaineer Fires Closure Area as described in Exhibit A and shown on Exhibit B. 36 CFR 261.55(a).
3. Being on the National Forest System roads within the Alder and Mountaineer Fires Closure Area as described in Exhibit A and shown on Exhibit B. 36 CFR 261.54(e).

Pursuant to 36 CFR 261.50(e), the following persons are exempt from this Order:

1. Any Federal, State or local officer, or member of an organized rescue or fire fighting force in the performance of an official duty.
2. Persons with a permit from the Forest Service specifically authorizing the otherwise prohibited act or omission.

These prohibitions are in addition to the general prohibitions in 36 CFR Part 261, Subpart A.

A violation of these prohibitions is punishable by a fine of not more than \$5,000 for an individual or \$10,000 for an organization, or imprisonment for not more than six months, or both.
16 USC 551 and 18 USC 3559, 3571, and 3581.

Done at Porterville, California this 19th day of October, 2018.



TERESA BENSON
Forest Supervisor
Sequoia National Forest

ORDER NO. 0513-18-17
SEQUOIA NATIONAL FOREST
WESTERN DIVIDE RANGER DISTRICT
ALDER AND MOUNTAINEER FIRES AREA, ROADS, AND TRAILS CLOSURE
EXHIBIT A

The boundary of the Alder and Mountaineer Fires Closure Area starts at the intersection of Mountaineer Trail (Forest Trail No. 32E10) and the east section line of Section 36, Township 19 South, Range 31 East, Mount Diablo Base and Meridian (MDB&M), then continues due south approximately 3.4 miles to its intersection with the southeast corner of Section 13 in Township 20 South, Range 31 East, MDB&M, then continues due west approximately 1 mile to its intersection with Log Cabin Road (Forest Road No. 20S81) in the southwest corner of Section 13, then continues west along and including Log Cabin Road for approximately 0.4 miles to its intersection with Hossack Trail (Forest Trail No. 31E24) in the southeast corner of Section 14, then continues west along and including Hossack Trail approximately 1.6 miles to its intersection with Crest (B Spur) Road (Forest Road No. 20S08B) in Section 22, then continues west along and including Crest Road for approximately 0.7 miles to its intersection with Crest Road (Forest Road No. 20S08) in Section 22, then continues north along and including Crest Road approximately 0.4 miles to its intersection with the forest boundary in the southwest corner of Section 15, then continues due north approximately one mile to its intersection with the southwest corner of Section 10, then continues due west approximately 1 mile to its intersection with Fox Farm Road (Forest Road No. 20S03) in the southeast corner of Section 8, then continues along and including Fox Farm Road approximately 2 miles to its intersection with Section 18, then continues due north to its intersection with the forest boundary in southwest corner of Section 8, then continues north approximately 1 mile along the forest boundary to its intersection with Doyle Trail (Forest Trail No. 30E14) in Section 8, then continues north along and including Doyle Trail approximately 2.4 miles to its intersection with Griswold Trail (Forest Trail No. 31E18) in Section 30, Township 19 South, Range 30 East, MDB&M, then continues north along and including Griswold Trail approximately 0.5 miles to its intersection with the forest boundary in Section 29, then continues northeast along the forest boundary approximately 1.5 miles to its intersection with Griswold Trail in the northwest corner of Section 28, then continues north along and including Griswold Trail for approximately 2 miles to its intersection with Summit Trail (Forest Trail No. 31E14), then continues southeast approximately 1.4 miles to its intersection with Mountaineer Trail (Forest Trail No. 32E10), then continues east approximately 2.8 miles back to the starting point as shown on Exhibit B.

R.30E.

R.31E.

R.32E.

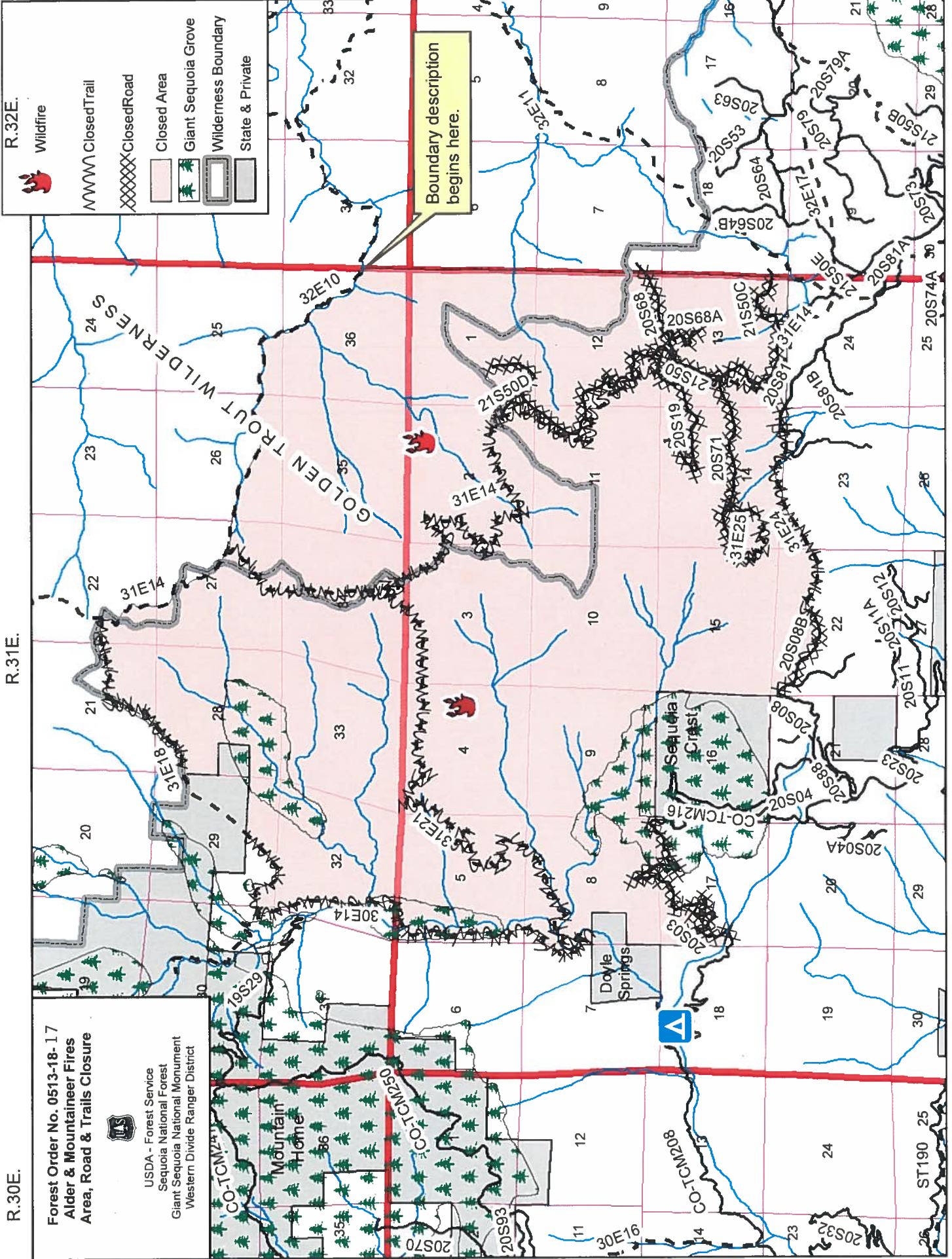
Forest Order No. 0513-18- 17
Alder & Mountaineer Fires
Area, Road & Trails Closure



USDA - Forest Service
Sequoia National Forest
Giant Sequoia National Monument
Western Divide Ranger District

T. 19 S.

T. 20 S.



Boundary description begins here.



10/18/18