

**ORDER NO. 0513-17-42**  
SEQUOIA NATIONAL FOREST  
GIANT SEQUOIA NATIONAL MONUMENT  
WESTERN DIVIDE RANGER DISTRICT

**PIER FIRE AREA, ROADS, AND TRAILS CLOSURE**

Pursuant to 16 USC 551 and 36 CFR 261.50(a) and (b), and to provide for public safety, the following acts are prohibited within the Western Divide Ranger District of the Sequoia National Forest and Giant Sequoia National Monument. This Order is effective from October 17, 2017, until the Pier Fire is declared out.

1. Going into or being upon National Forest System lands within the Pier Fire Closure Area. The Pier Fire Closure Area is described in Exhibit A and shown on Exhibit B. 36 CFR 261.52(e).
2. Being on the National Forest System trails within the Pier Fire Closure Area, as shown on Exhibit B. 36 CFR 261.55(a).
3. Being on the National Forest System roads within the Pier Fire Closure Area, as shown on Exhibit B. 36 CFR 261.54(e).


Pursuant to 36 CFR 261.50(e), the following persons are exempt from this Order:

1. Any Federal, State or local officer, or member of an organized rescue or fire fighting force in the performance of an official duty.
2. Persons with a permit from the Forest Service specifically authorizing the otherwise prohibited act or omission.

These prohibitions are in addition to the general prohibitions in 36 CFR Part 261, Subpart A.

A violation of these prohibitions is punishable by a fine of not more than \$5,000 for an individual or \$10,000 for an organization, or imprisonment for not more than six months, or both. 16 USC 551 and 18 USC 3559, 3571, and 3581.

Done at Porterville, California this 16th day of October, 2017.

  
KEVIN B. ELLIOTT  
Forest Supervisor  
Sequoia National Forest

This Order supersedes Order No. 0513-17-39, signed on September 19, 2017.

**ORDER NO. 0513-17-42**  
**SEQUOIA NATIONAL FOREST**  
**GIANT SEQUOIA NATIONAL MONUMENT**  
**WESTERN DIVIDE RANGER DISTRICT**  
**PIER FIRE AREA, ROADS, AND TRAILS CLOSURE**  
**EXHIBIT A**

The boundary of the Pier Fire Closure Area starts at the intersection of the Sequoia National Forest boundary and State Highway 190 in Section 31, Township 20 South, Range 30 East, Mount Diablo Base and Meridian (“MDBM”), then continues northeast approximately 4 miles along the south side of Highway 190 to its intersection with County Highway 208 in the northwest corner of Section 26, Township 20 South, Range 30 East, MDBM, then continues northeast approximately 2 miles along the south side of County Highway 208 to its intersection with Fox Farm Road (Forest Road No. 20S03) in Section 18, Township 20 South, Range 30 East, MDBM, then continues approximately 3 miles along the south side of Fox Farm Road to its intersection with the northeast corner of Section 17, Township 20 East, Range 31 East, MDBM, then continues due south approximately 1 mile to the southeast corner of Section 17, Township 20 East, Range 31 East, MDBM, then continues due east approximately .25 miles to its intersection with County Highway 216 in Section 21, Township 20 East, Range 31 East, MDBM, then continues approximately 5 miles along the west side of County Highway 216 to its intersection with the southeast corner of Section 28, Township 20 East, Range 31 East, MDBM, then continues due west approximately .5 miles to the northeast corner of Section 32, Township 20 East, Range 31 East, MDBM, then continues due south approximately .5 miles to the forest boundary in Section 32, Township 20 East, Range 31 East, MDBM, then continues along the west side of the forest boundary to its intersection with the northeast corner of Section 4, Township 21 South, Range 30 East, MDBM, then continues approximately 1 mile due south to its intersection with the southeast corner of Section 4, Township 21 East, Range 31 East, MDBM, then continues due east approximately .25 miles to its intersection with Crawford Road (Forest Road No. 21S94) in Section 10, Township 21 South, Range 31 East, MDBM, then continues southwest approximately 3 miles along the southwest side of Crawford Road to its intersection with the forest boundary in Section 17, Township 21 East, Range 31 East, MDBM, then continues west, south, and north approximately 11 miles along the forest boundary back to the starting point, as shown on Exhibit B.

R.29E.

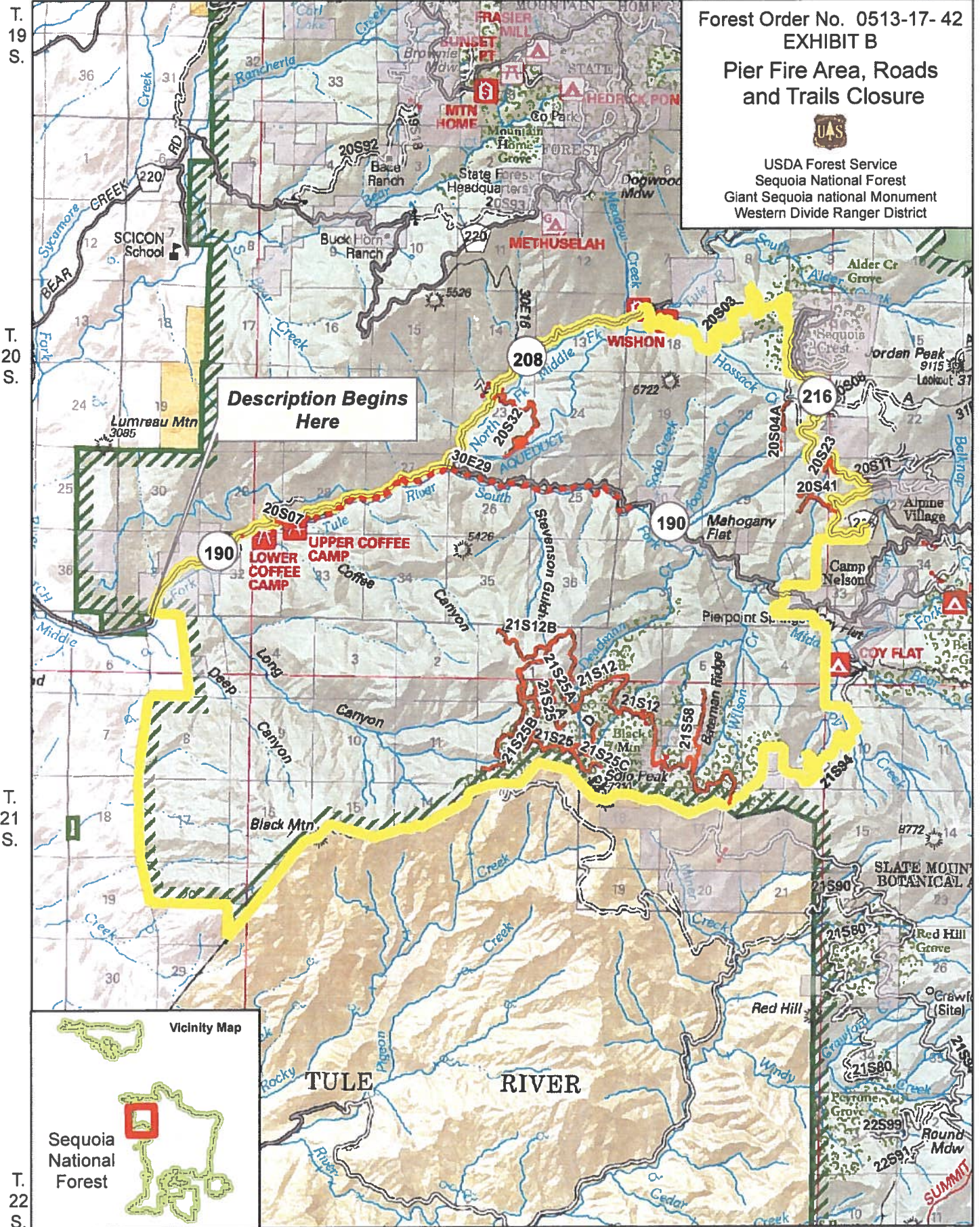
R.30E.

R.31E.

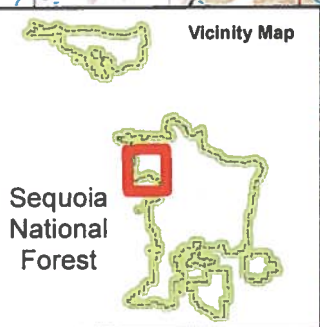
Forest Order No. 0513-17-42  
 EXHIBIT B  
 Pier Fire Area, Roads  
 and Trails Closure



USDA Forest Service  
 Sequoia National Forest  
 Giant Sequoia National Monument  
 Western Divide Ranger District



Description Begins Here



- Closed Roads
- - - Closed Trails
- Closure Area
- Non FS Land

