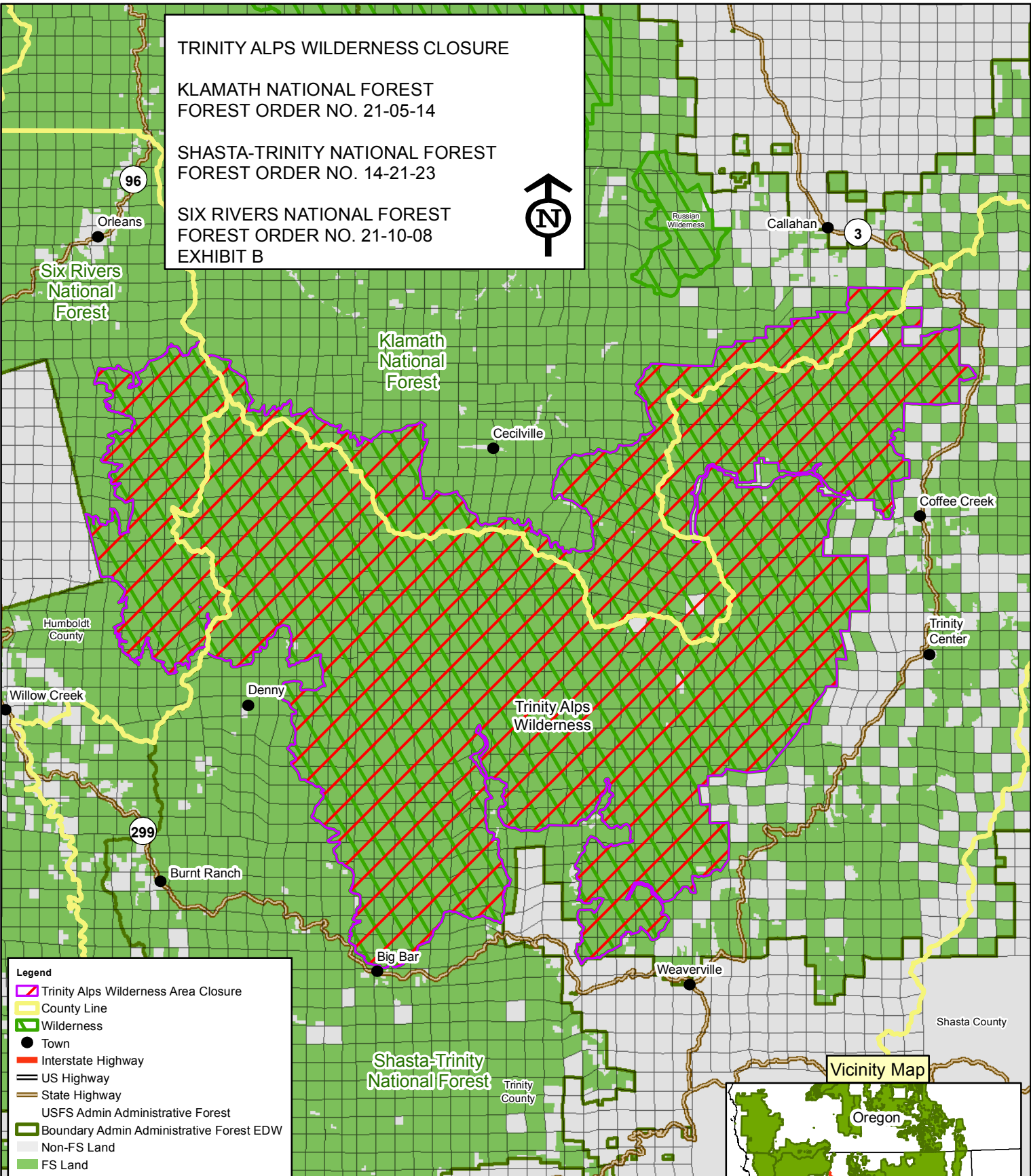


TRINITY ALPS WILDERNESS CLOSURE

KLAMATH NATIONAL FOREST  
FOREST ORDER NO. 21-05-14

SHASTA-TRINITY NATIONAL FOREST  
FOREST ORDER NO. 14-21-23

SIX RIVERS NATIONAL FOREST  
FOREST ORDER NO. 21-10-08  
EXHIBIT B



- Legend**
- Trinity Alps Wilderness Area Closure
  - County Line
  - Wilderness
  - Town
  - Interstate Highway
  - US Highway
  - State Highway
  - USFS Admin Administrative Forest
  - Boundary Admin Administrative Forest EDW
  - Non-FS Land
  - FS Land

This product is reproduced from information prepared by the USDA, Forest Service or from other suppliers. The Forest Service cannot assure the reliability or suitability of this information for a particular purpose. The data and product accuracy may vary due to compilation from various sources, including modeling and interpretation, and may not meet National Map Accuracy Standards. This information may be updated, corrected or otherwise modified without notification. For more information contact: Shasta-Trinity National Forest Supervisors Office at (530) 226-2500. The USDA is an equal opportunity provider and employer.

