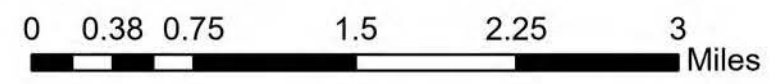


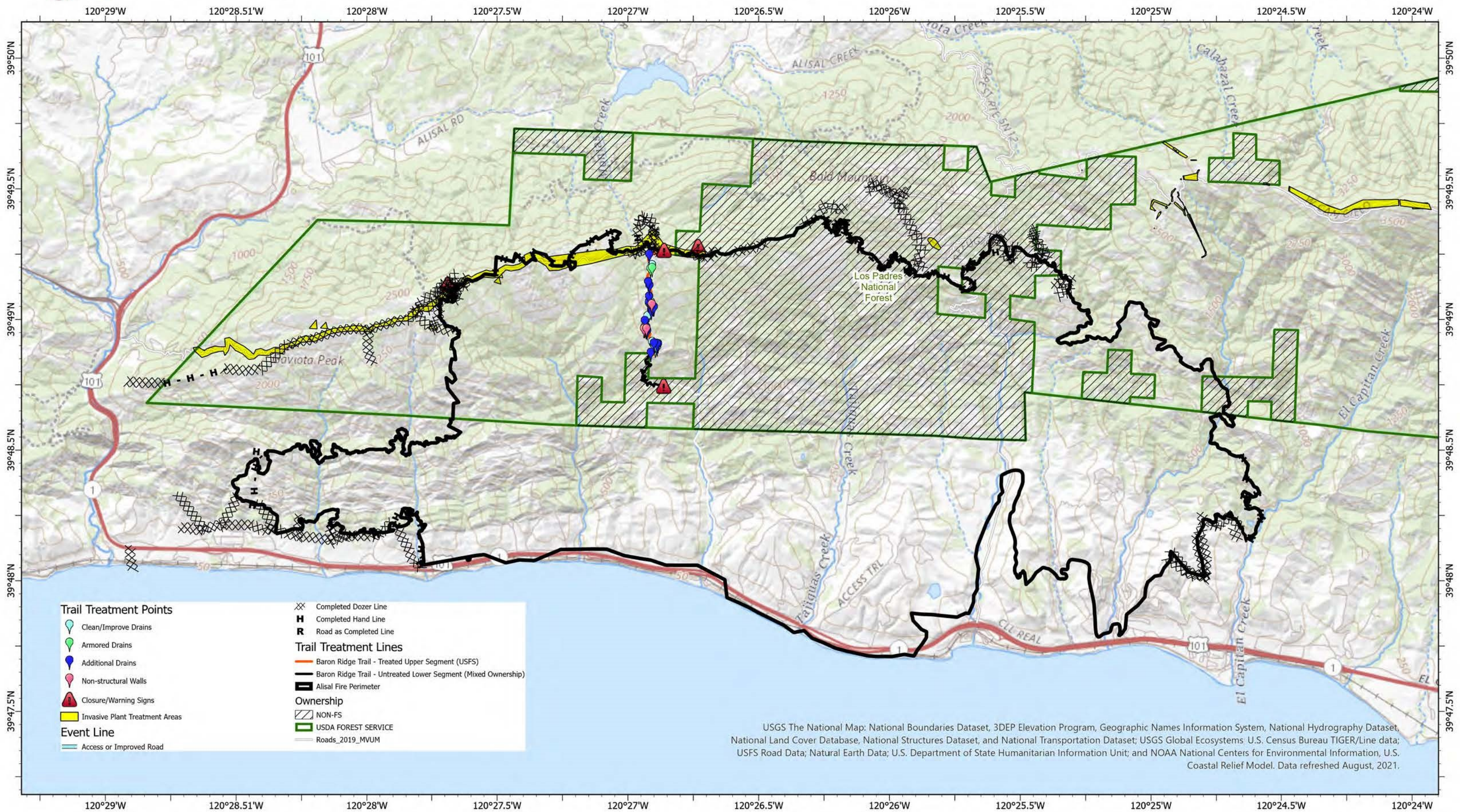
Recommended Treatments

2021 Alisal Fire

Los Padres NF



Disclaimer:
 The USDA Forest Service uses the most current and complete data available. GIS data and product accuracy may vary. They may be developed from sources of differing accuracy, accurate only at certain scales, based on modeling or interpretation, incomplete while being created or revised, etc. Using GIS products for purposes other than those for which they were created, may yield inaccurate or misleading results. The Forest Service reserves the right to correct, update, modify, or replace, GIS products without notification.



Trail Treatment Points		⊗ Completed Dozer Line
🟢 Clean/Improve Drains	⊠ Completed Hand Line	⊠ Road as Completed Line
🟢 Armored Drains	Trail Treatment Lines	
🟡 Additional Drains	— Baron Ridge Trail - Treated Upper Segment (USFS)	— Baron Ridge Trail - Untreated Lower Segment (Mixed Ownership)
🔴 Non-structural Walls	— Alisal Fire Perimeter	Ownership
🚧 Closure/Warning Signs	🟡 Invasive Plant Treatment Areas	▨ NON-FS
Event Line		🟢 USDA FOREST SERVICE
— Access or Improved Road		— Roads_2019_MVUM

USGS The National Map: National Boundaries Dataset, 3DEP Elevation Program, Geographic Names Information System, National Hydrography Dataset, National Land Cover Database, National Structures Dataset, and National Transportation Dataset; USGS Global Ecosystems: U.S. Census Bureau TIGER/Line data; USFS Road Data; Natural Earth Data; U.S. Department of State Humanitarian Information Unit; and NOAA National Centers for Environmental Information, U.S. Coastal Relief Model. Data refreshed August, 2021.