

CAL FIRE NEWS RELEASE

California Department of Forestry and Fire Protection



CONTACT: Incident Information Line:
530-303-2455
Media Line
530-497-0315

RELEASE DATE: August 30, 2021
11:00 a.m.

WHAT: Update to Evacuation Orders

WHEN: **Effective Immediately**

WHERE: **El Dorado County**

Evacuation Order:

El Dorado County

Heavenly

- East of Pioneer Trail between Larch and Al Tahoe, to include the area of Heavenly Ski Resort out to the Alpine County Line and the Nevada State line on the East.

Stateline

- East of Ski run on the lake side of Pioneer Trail and also both sides of Pioneer Trail between Larch and the Nevada State line.

Evacuation Routes:

- Evacuate Eastbound on Highway 50 towards Nevada.

Evacuation Shelters:

- Truckee Veterans Hall 10214 High Street, Truckee, CA 96161
- Douglas County Community Center, 1329 Waterloo Lane, Gardnerville, NV

NOTES:

Please go to: www.tinyurl.com/EDSOEVAC for an online evacuation map.

All previous evacuation orders and warnings remain in effect.

A mandatory **evacuation order** is defined as an immediate threat to life. This is a lawful order to leave now. The area is lawfully closed to public access.

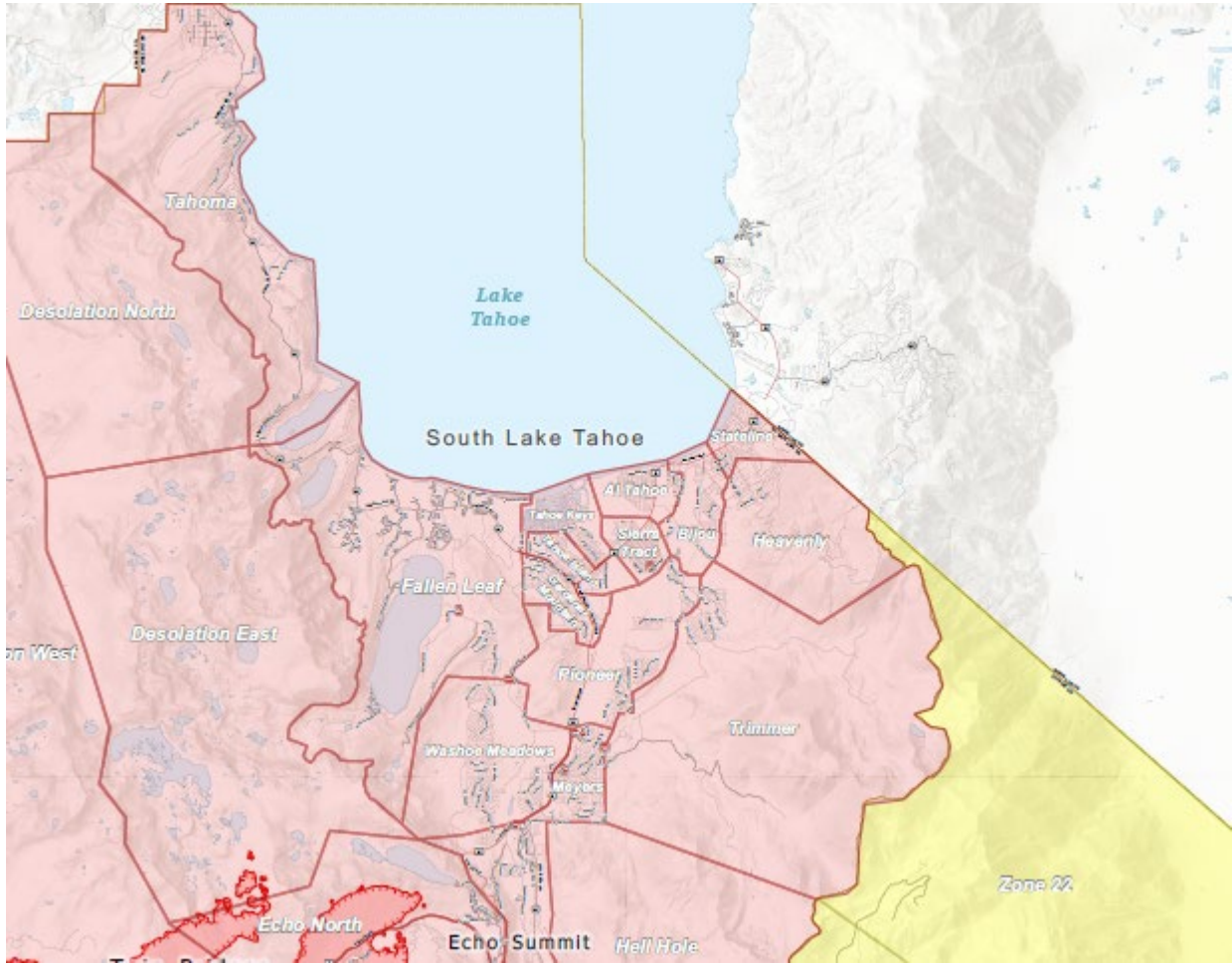
An **evacuation warning** is defined as a potential threat to life and/or property. Those who require additional time to evacuate and those with pets and livestock should leave now.



For additional information, scan the QR code above or visit <https://linktr.ee/imt6>

Safety Message:

The public is reminded to stay vigilant on current fire conditions. Please continue to adhere to road closures and any evacuation orders and warnings. A reminder to drive slowly and yield to emergency personnel in the area. There will be smoke in the respective areas as firefighters continue firefighting operations. If at any time you feel unsafe, please call 911.



www.readyforwildfire.org

###