

CAL FIRE NEWS RELEASE

California Department of Forestry and Fire Protection



CONTACT: Incident Information Line:
530-303-2455
Media Line
530-497-0315

RELEASE DATE: August 29, 2021
9:00 p.m.

WHAT: Update to Evacuation Warnings

WHEN: **Effective Immediately**

WHERE: **El Dorado County and Alpine County**

Evacuation Order:

El Dorado County

Desolation Wilderness from the watershed ridge to the CA ENF/CA TMU wilderness boundary. From the El Dorado/Placer county line to Echo Lakes.

Alpine County

Highway 89 south, from Luther Pass Road to the Pickets Junction (Highway 88). West on Highway 88 to Kirkwood. South to include Kirkwood Ski Resort and Caples Lake.

Evacuation Warning:

El Dorado County

The remaining area of the Lake Tahoe Basin. From the Alpine/El Dorado county line, north along the California/Nevada state line to Lake Tahoe. North along the waters edge to the El Dorado/Placer county line. West along the El Dorado/Placer county line to McKinney Lake.

Alpine County

Highway 88 at Forestdale Road. West of Forestdale Road and south to the Pacific Crest Trail Crossing. West of the Pacific Crest Trail to the Summit City Canyon Trail. West of Summit City Canyon Trail and south to the El Dorado / Stanislaus National Forest Line. El Dorado / Stanislaus National Forest Line west to the Alpine and Amador County line.

South of Armstrong Summit to Woodfords to Forestdale Road, north of Highway 88 and Highway 89 to Armstrong Summit.

Evacuation Shelter:

Nevada

- A Red Cross Shelter is open for those evacuating from the area at the Douglas County Community Center, 1329 Waterloo Lane, Gardnerville, NV

NOTES:

Please go to: www.tinyurl.com/EDSOEVAC for an online evacuation map. All previous evacuation orders and warnings remain in effect.

A mandatory **evacuation order** is defined as an immediate threat to life. This is a lawful order to leave now. The area is lawfully closed to public access.

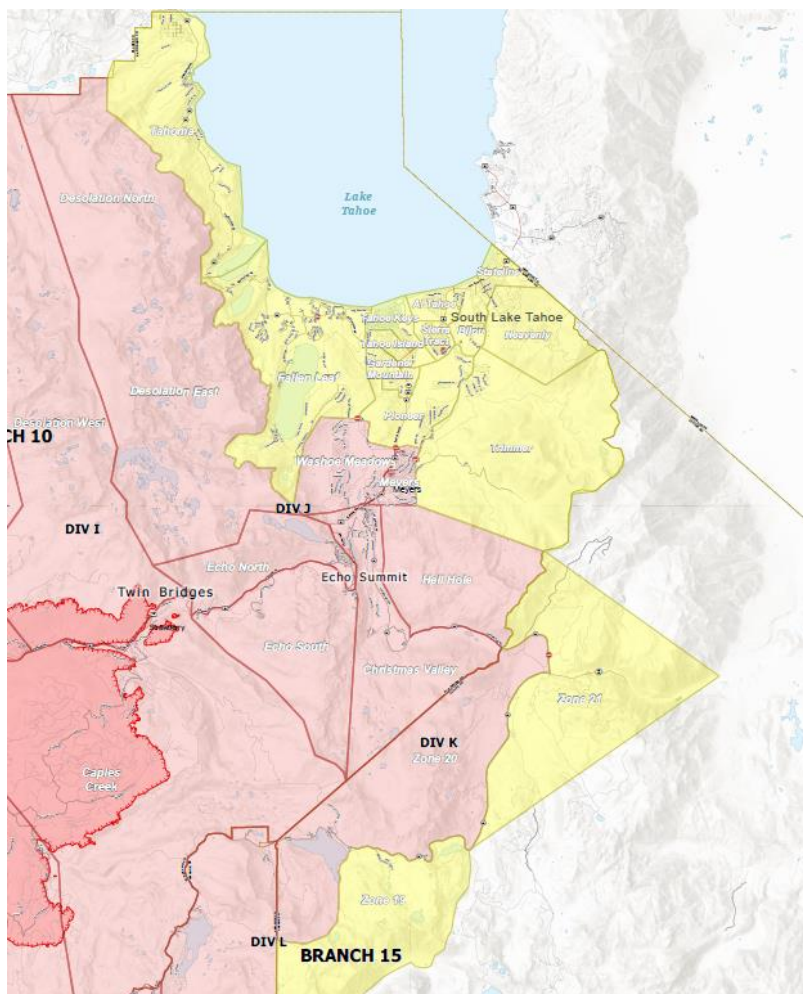
An **evacuation warning** is defined as a potential threat to life and/or property. Those who require additional time to evacuate and those with pets and livestock should leave now.



For additional information, scan the QR code above or visit <https://linktr.ee/imt6>

Safety Message:

The public is reminded to stay vigilant on current fire conditions. Please continue to adhere to road closures and any evacuation orders and warnings. A reminder to drive slowly and yield to emergency personnel in the area. There will be smoke in the respective areas as firefighters continue firefighting operations. If at any time you feel unsafe, please call 911.



www.readyforwildfire.org

###