

CAL FIRE NEWS RELEASE

California Department of Forestry and Fire Protection



CONTACT: Incident Information Line:
530-303-2455
Media Line
530-497-0315

RELEASE DATE: August 29, 2021
4:30 p.m.

WHAT: Update to Evacuation Orders, Warnings and Road Closures

WHEN: **Effective Immediately**

WHERE: **El Dorado County and Alpine County**

Road Closures:

- The Highway 50 closure has been extended East to Sawmill Road
- Highway 50 at Sawmill
- Pioneer Trail at Elks Club
- Elks Club at Highway 50
- Highway 89 at Highway 88 junction
- Fallen Leaf at Tahoe Mountain

Evacuation Routes:

El Dorado County

- Residents evacuating the area should use Highway 50 East or Highway 89 North.

Alpine County

- West on Highway 88 to Northbound 89 to Eastbound Highway 50

Evacuation Order:

El Dorado County

- Christmas Valley from Highway 89 West to Echo Summit
- Highway 89 due West to Watershed Ridge/Echo Summit and South to the Amador/El Dorado County line.
- The area from Luther Pass Road, north along the El Dorado/Alpine County line to Armstrong Pass. West from Armstrong Pass to Upper Apache at Meyers. West on Upper Apache to Highway 50. West on Highway 50 to Highway 89. South on Highway 89 to the El Dorado/Alpine County line. This includes all homes on both sides of Highway 89.

- The area from Upper Apache at Meyers, north along Highway 50, to Elks Club Drive. East on Elks Club Drive to Pioneer Trail, extending due south to Upper Apache at Meyers. (This includes all homes off of Oneidas, Mandan, Apache, Ottawa and Player).
- The area North on Highway 50 from Highway 89 to Saw Mill Road. West on Saw Mill Road to Angora Ridge, extending to the Echo Summit.

Alpine County

- Highway 89 South from Luther Pass Road to Pickets Junction (Highway 88)
- West on Highway 88 to Kirkwood

Evacuation Warning:

El Dorado County

- The area from Sawmill Road at Lake Tahoe Blvd. extending north to Pope Beach. Along the water's edge to Eagle Point. From Eagle Point west, to Desolation Wilderness, across Emerald Bay.

Evacuation Shelter:

Nevada

- A Red Cross Shelter is open for those evacuating from the area at the Douglas County Community Center, 1329 Waterloo Lane, Gardnerville, NV.

NOTES:

Please go to: www.tinyurl.com/EDSOEVAC for an online evacuation map.

All previous evacuation orders and warnings remain in effect

A mandatory **evacuation order** is defined as an immediate threat to life. This is a lawful order to leave now. The area is lawfully closed to public access.

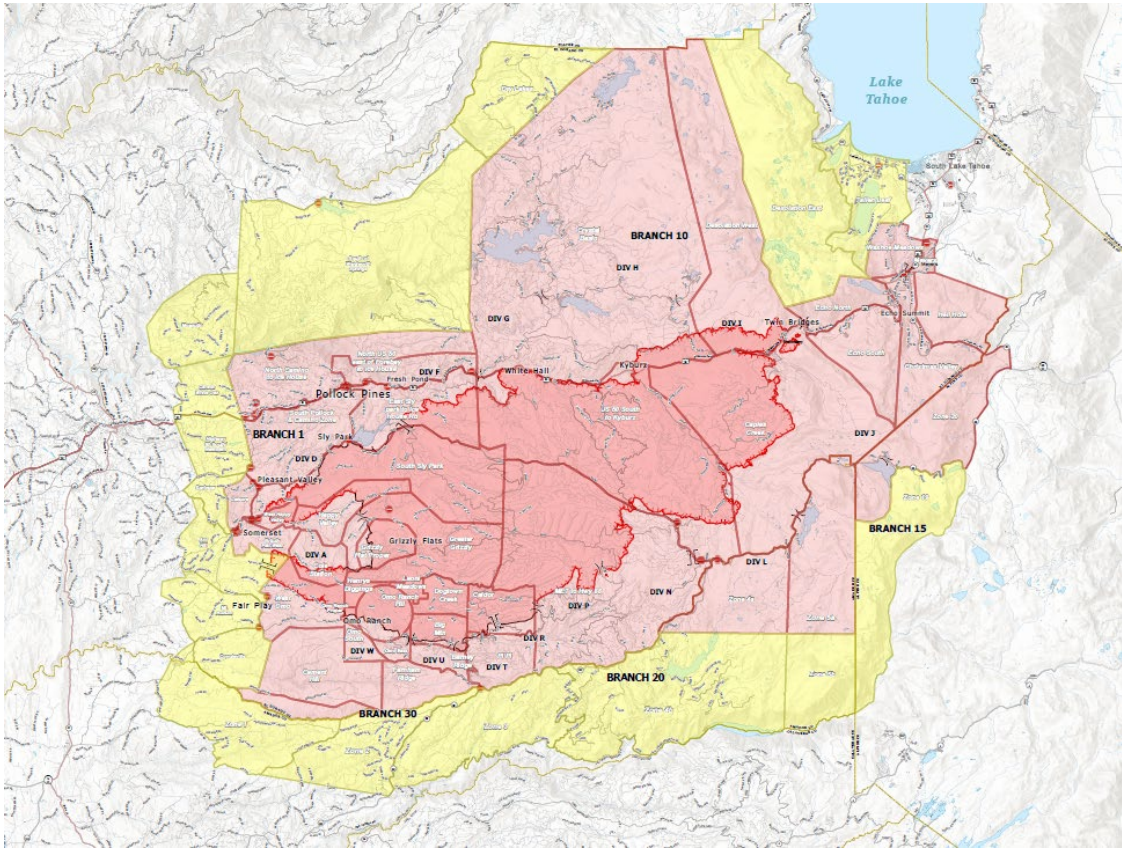
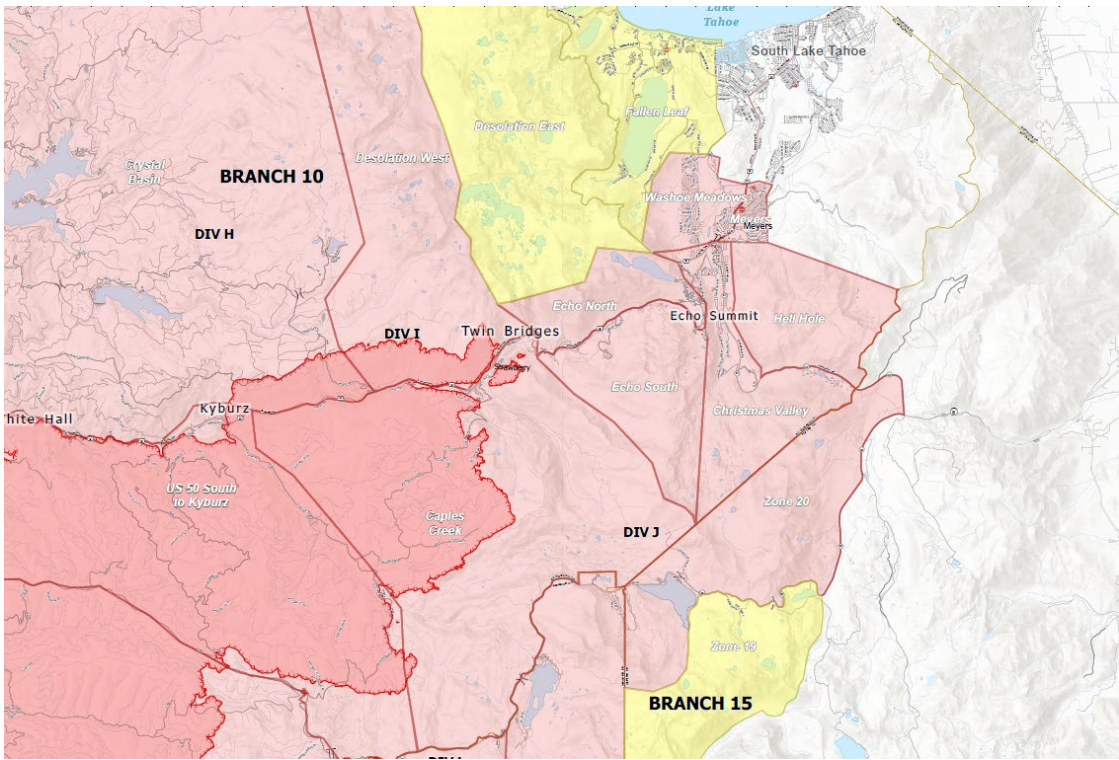
An **evacuation warning** is defined as a potential threat to life and/or property. Those who require additional time to evacuate and those with pets and livestock should leave now.



For additional information, scan the QR code above or visit <https://linktr.ee/imt6>

Safety Message:

The public is reminded to stay vigilant on current fire conditions. Please continue to adhere to road closures and any evacuation orders and warnings. A reminder to drive slowly and yield to emergency personnel in the area. There will be smoke in the respective areas as firefighters continue firefighting operations. If at any time you feel unsafe, please call 911.



www.readyforwildfire.org

###