

Valley Fire BAER
CA-CNF-002833

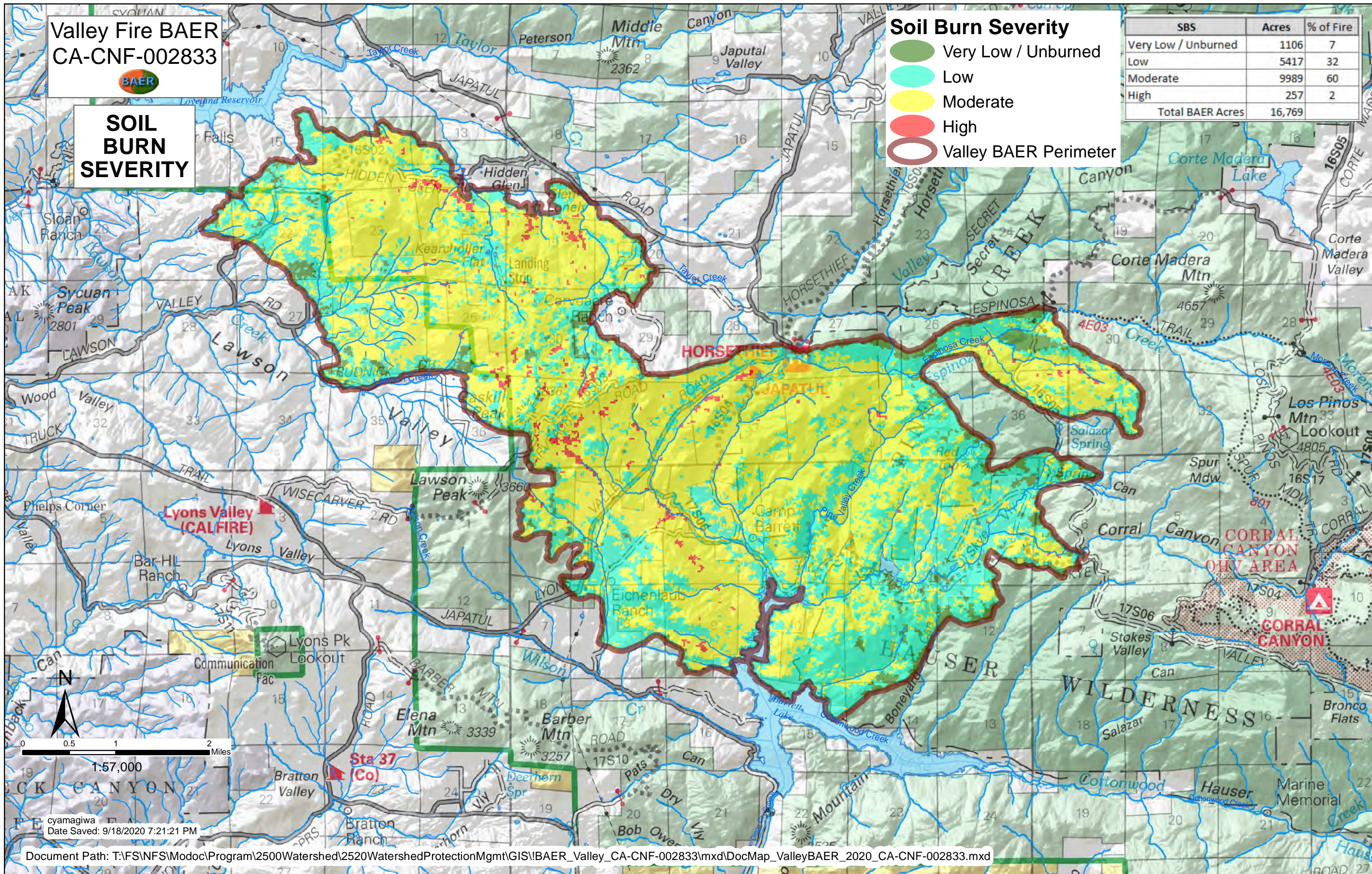


**SOIL
BURN
SEVERITY**

Soil Burn Severity

- Very Low / Unburned
- Low
- Moderate
- High
- Valley BAER Perimeter

SBS	Acres	% of Fire
Very Low / Unburned	1106	7
Low	5417	32
Moderate	9989	60
High	257	2
Total BAER Acres	16,769	



cyamagiwa
Date Saved: 9/18/2020 7:21:21 PM

Document Path: T:\FS\NFS\Modoc\Program\2500Watershed\2520WatershedProtectionMgmt\GIS\BAER_Valley_CA-CNF-002833\mxd\DocMap_ValleyBAER_2020_CA-CNF-002833.mxd