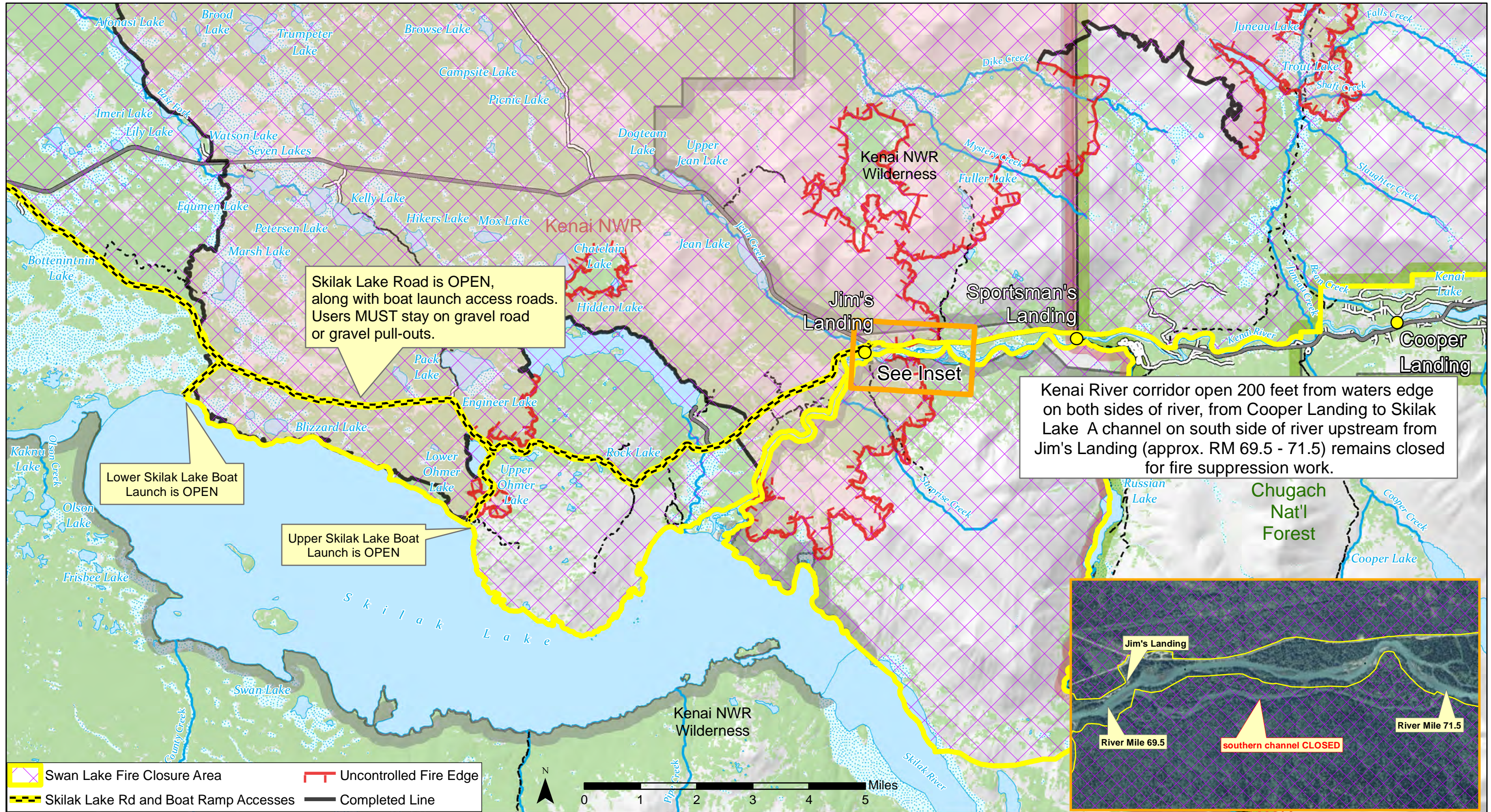


Combined Emergency Area Closure: effective September 17, 2019

Kenai National Wildlife Refuge and Chugach National Forest

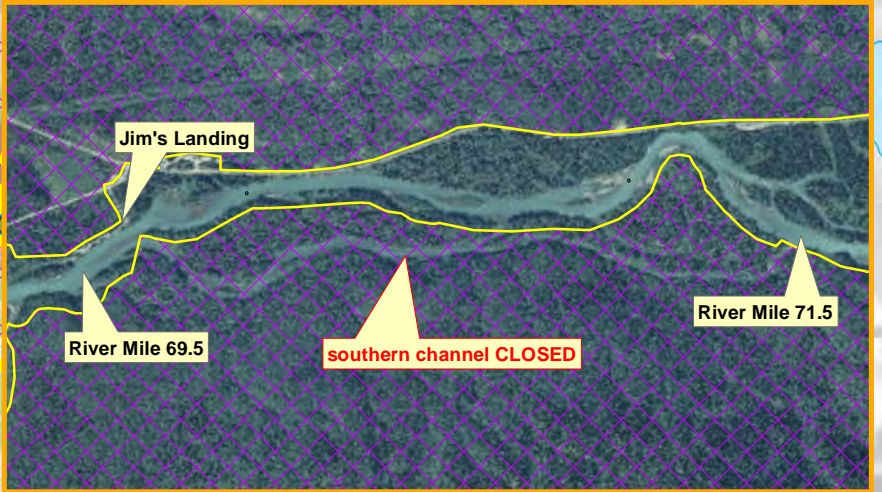


Skilak Lake Road is OPEN, along with boat launch access roads. Users MUST stay on gravel road or gravel pull-outs.

Lower Skilak Lake Boat Launch is OPEN

Upper Skilak Lake Boat Launch is OPEN

Kenai River corridor open 200 feet from waters edge on both sides of river, from Cooper Landing to Skilak Lake. A channel on south side of river upstream from Jim's Landing (approx. RM 69.5 - 71.5) remains closed for fire suppression work.



- Swan Lake Fire Closure Area
- Skilak Lake Rd and Boat Ramp Accesses
- Uncontrolled Fire Edge
- Completed Line

